

Support Bulletin

April 15, 2026

TRIMBLE T110 TABLET: OS REINSTALL INSTRUCTIONS

⚠ **CAUTION** - Installing this operating system image will erase all software installed on the device, and all data stored on the internal storage on the device.

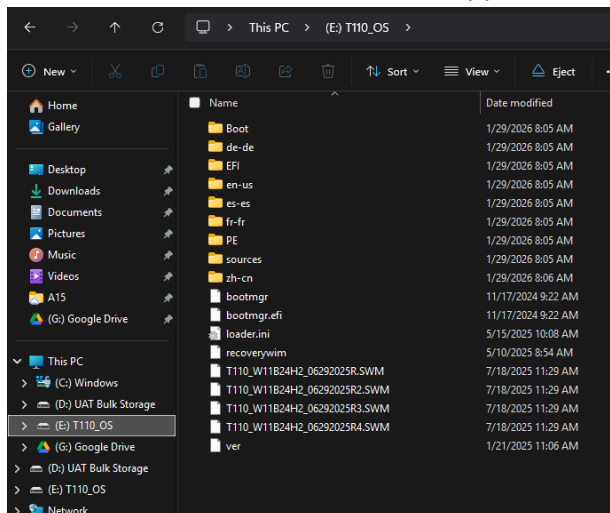
Overview

To reinstall the OS on a Trimble T110® tablet, the following equipment is needed:

- AC power adapter and cord
- USB hub
- USB keyboard
- USB flash drive prepared with the T110 OS image, available at <https://mcs.trimble.com>

USB Flash Drive Preparation

- Connect a USB flash drive (minimum size 16GB) to a Windows computer.
- Select Quick Format and Fat32 file system.
- Download the latest released OS image.
- Unzip the .zip file.
- Select all of the folders and files and copy them to the root directory of the newly formatted flash drive.



trimble.com

OS Installation Instructions

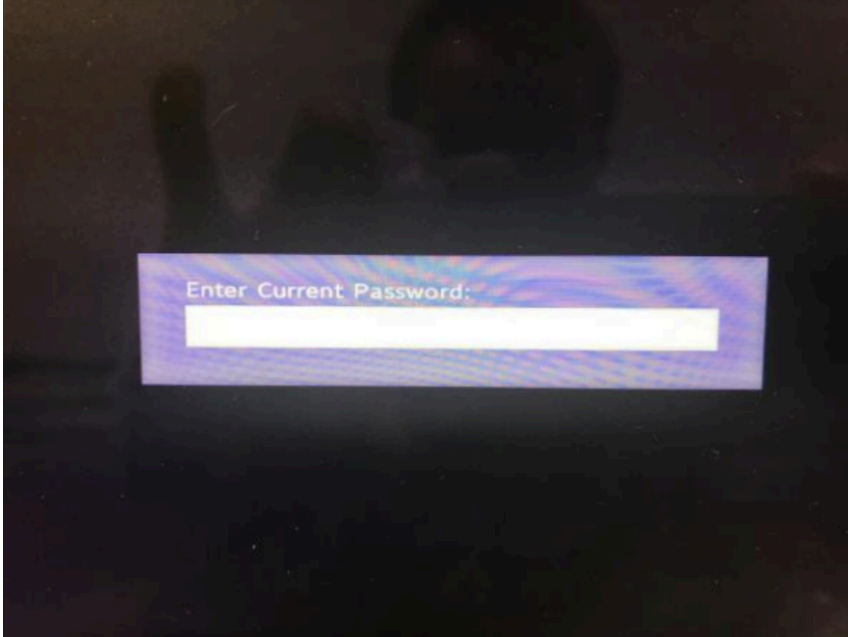
1. Make sure AC power is always connected during the installation process
2. Plug the USB hub into the T110 USB port and then plug the USB keyboard and the USB flash device into the USB hub



3. Power on the T110 tablet. During power on, press and hold the keyboard **Esc** key to enter the BIOS setup menu
4. Use the keyboard arrow keys or touch to select **Boot Manager**



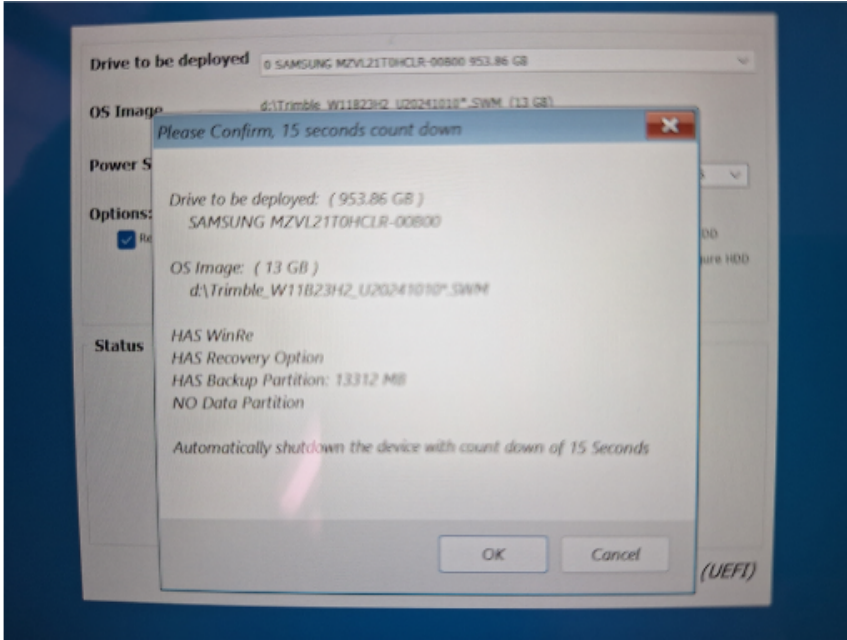
5. You will be prompted for a password
 - The default password is: **password******
 - ****** is the last 4 digits of the T110's serial number**



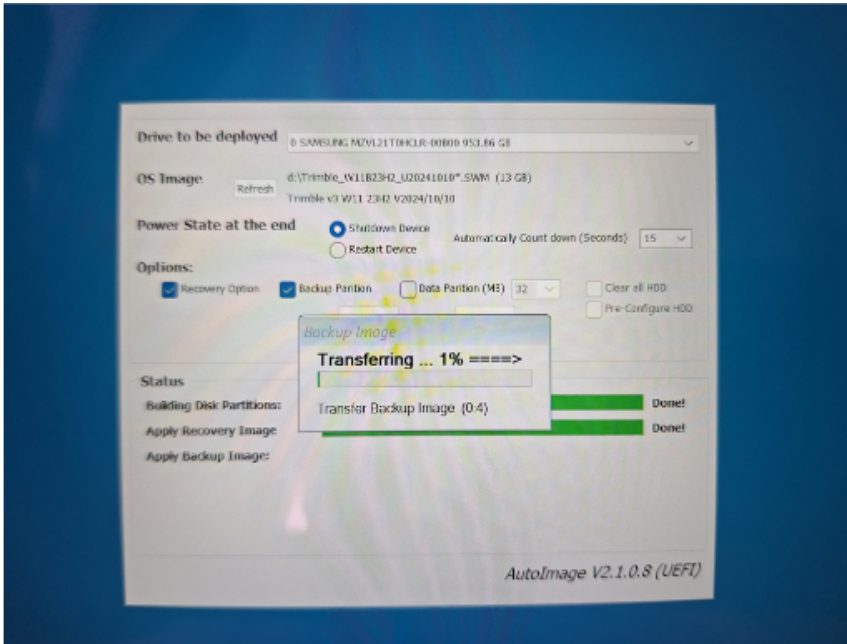
6. The Boot Manager page should be displayed. Use the arrow key or touchscreen to select **EFI USB Device (UFD USB Flash Drive)**, and then press **enter**. The USB device name will vary depending on the USB stick used.



7. The OS installation will prompt to confirm proceeding - press 'OK' or wait for the 15s automatic timeout.



8. Installation progress will be shown as the OS image is copied to the internal disk.



9. When complete, the device will shut down automatically

For More Information

Contact your local Trimble distributor.