

Support Note



16 May 2022

TRIMBLE T7 / YUMA 7 TABLET: INSTRUCTIONS FOR REINSTALLING THE TRIMBLE OPERATING SYSTEM

This support note provides guidance and instructions on reinstalling the latest released Trimble® operating system on a Trimble Yuma® 7 or Trimble T7 tablet, using a formatted USB drive.

The latest version is:

- Trimble OS 21H2, based on Microsoft® Windows® 10 Professional Edition version 21H2 (November 2021 Update).
- The Microsoft Version can be found under **Start > Settings > System > About**.

The Trimble operating system includes the standard Windows 10 Professional operating system (including the latest Windows updates available at the time of the Trimble operating system release), plus additional components which makes the Trimble operating system build unique to any other Windows 10 operating system image. The additional components include:

- Drivers and software required for proper operation of hardware components integrated with the Yuma 7 data collector / T7 tablet, including the Intel Chipset, Camera, Audio, WLAN, Bluetooth®, WWAN, GNSS, RS232, Power Management, etc.

Note - Occasionally a Microsoft update may overwrite a driver that was installed in the Trimble operating system image. This should not cause any issues and Trimble makes every attempt to proactively test driver updates pushed out by the Windows updates.

- Apps provided by Trimble for using the built-in keyboard, touch panel and SDK.
- Trimble EMPOWER module components, including the Module Support Packages (MSPs) and Demo software.

© 2022, Trimble Inc. All rights reserved. Trimble, the Globe & Triangle logo, and Yuma are trademarks of Trimble Inc., registered in the United States and in other countries. Microsoft and Windows are either registered trademarks or trademarks of Microsoft Corporation in the United States and/or other countries. The Bluetooth word mark and logos are owned by the Bluetooth SIG, Inc. and any use of such marks by Trimble Inc. is under license. All other trademarks are the property of their respective owners.

After performing the operating system installation:

- It is strongly recommended that you install new Microsoft Windows updates using the standard Microsoft update procedure, as the Trimble operating system may not include the latest Windows updates. For more information on installing Windows 10 updates, go to:

<https://support.microsoft.com/en-us/help/4027667/windows-10-update>.

Affected Units

This support note applies to all Trimble Yuma 7 and T7 devices.

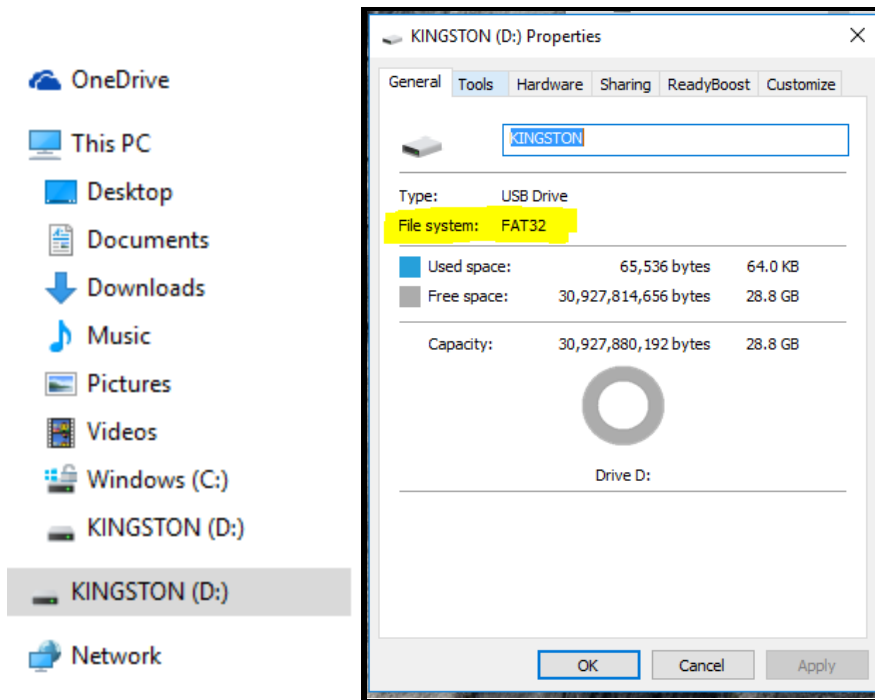
Instructions for Creating a USB Drive for Installing the Trimble Operating System

CAUTION - Reinstalling the Trimble operating system will erase all software installed on the device, and all data stored on the internal storage on the device. Backup all personal data before starting this process.

- Use a USB drive which has a memory capacity of 16 or 32GB. It is best to choose a well-known brand. For USB flash drives larger than 32GB you may need additional instructions on partitioning FAT32 available [here](#).
- Use a USB 2.0 flash drive if you are inserting directly into the Yuma 7 / T7 device; if you use a USB 3.0 flash drive, you may get an error message. To resolve this, connect the Yuma 7 / T7 device to a desktop hub and insert the USB 3.0 flash drive into the hub; this converts it to USB 2.0.
- Check the USB Format type and ensure it is formatted as FAT32; see below.

To create a bootable USB drive for the Trimble operating system image installation:

1. Check the USB Format type and ensure it is formatted as FAT32. In Windows Explorer, locate your USB drive and right click on it, then choose **Properties**. Make sure that it says **FAT32** next to the **File System** as shown below:



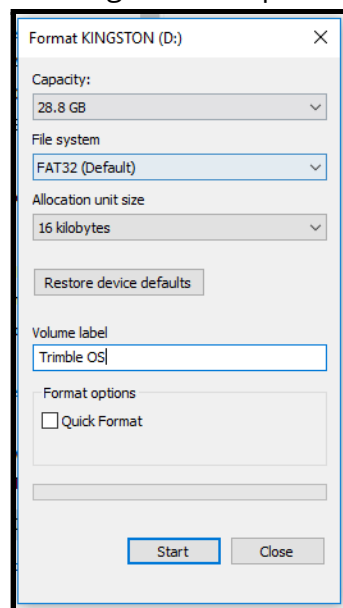
2. If it does not show **FAT32**, you will need to format the USB drive.

CAUTION - Formatting the USB drive will erase everything stored on it, so make sure you backup all data on the drive.

For detailed formatting instructions, go to

<https://www.wikihow.com/Format-FAT32>

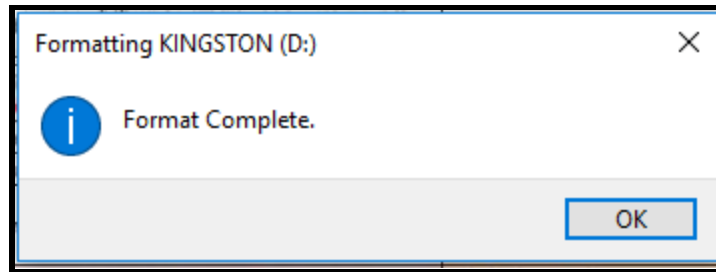
- a. In Windows Explorer, right-click the USB drive and select **Format**; the following window opens:



- b. Select **FAT32** from the **File System** menu.
- c. Clear the **Quick Format** checkbox if the USB drive has been performing

poorly, for example running slowly or displaying error messages. This will perform a full format and repair any problems with the USB drive. A full format can take approximately 20 minutes.

- d. Change the **Volume label** if desired; this is the name that appears when the drive is connected to a device.
- e. Click **Start** to begin the format process. You will be prompted to confirm you want to delete everything on the drive.
- f. When formatting is completed, the following message displays:

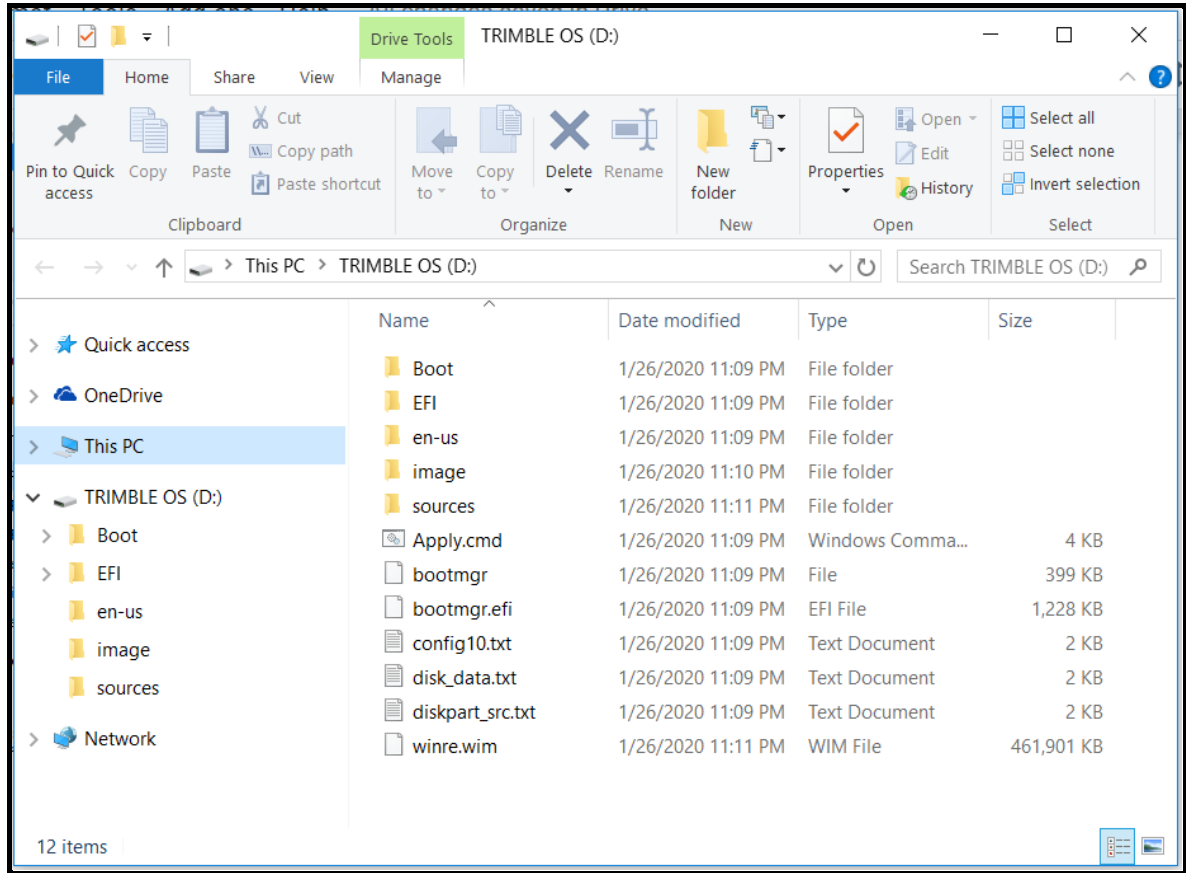


Instructions for Downloading and Updating the Yuma 7 / T7 Trimble Operating System

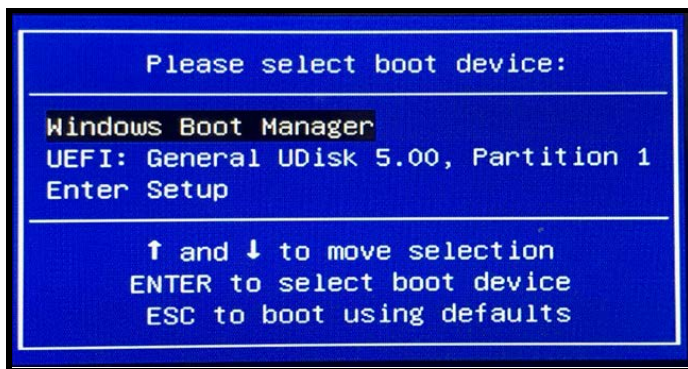
1. Download the latest Trimble operating system installer from https://d2kmytid4j1mcb.cloudfront.net/121600_21H2.zip

Note that this file is > 10 GB, so it is recommended that you are connected to a fast network and download over Ethernet, not Wi-Fi, or the download may take many more hours. Ensure that your PC has enough room to store up to 11 GB of files. Note that some browsers may issue a warning for the http (non-secure) links traditionally used for the dl.trimble.com site. Chrome does not seem to have this issue.

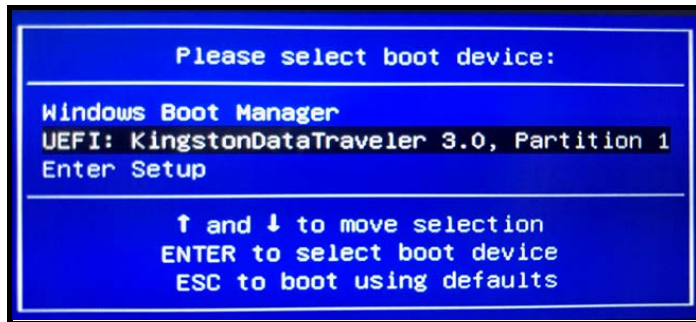
2. Extract the files to your office computer.
3. Connect the USB flash drive to the PC that has the OS image files.
4. Copy the extracted files into the root directory of the USB drive as shown below. IMPORTANT: Do not copy the zip file.



3. Make sure the Yuma 7 / T7 device is connected to mains power and has power supplied.
4. Shut down the Yuma 7 / T7 device.
5. Connect the USB flash drive containing the OS to the Yuma 7 / T7 device.
6. Power on the Yuma 7 / T7 device. When the Trimble logo appears, repeatedly press and release the **Windows** button until you see the Boot menu displayed.
 - a. If the tablet starts normally, shutdown and repeat.



7. Using the directional arrows on the keypad, navigate to highlight your USB drive from the boot options (which will show something similar to UEFI: USB drive name, Partition x).



8. Press the **Enter** key. The installation automatically starts.
9. The installation will take approximately 10 minutes to complete, then the Yuma 7 / T7 device will shut down and you can remove your USB drive.
10. After the device has shut down and you have removed your USB drive, power on the Yuma 7 / T7 tablet.
11. On the first boot, it will take a few minutes to prepare the device since it is now in the factory default state. When the Yuma 7 / T7 device has finished booting up, you are prompted to select your language, region, and keyboard layout, and accept the Windows 10 License Agreement. You can then set your Login and Password and finish choosing your settings.
12. Once logged in, you can install any Trimble, third party, or custom software.

Release Notes

Trimble OS version 21H2

- Based on Windows 10 21H2
- Support for 2nd-source camera and Wi-Fi/BT

More Information

Contact your Trimble Regional Sales Manager or local Trimble Distribution Partner for more information.